

Date: 4-1-2011  
Model Year:

## Sport C Technical Standards

Max. Total Cu. In.	Minimum	Minimum	
Displacement	Boat length	Weight	Class type
35.00 CI	8' (14' Max.)	675 Lbs.	Pure Stock

Minimum age requirements 14

Total Cu. Ft. of Foam in Boat, Including Cockpit	Cu. Ft. of Foam in Reinforced Cockpit Structure, If So Equipped	<b>2.0 CF</b>
--	---	---------------

### Sport C 4.0 CF

#### Sport C Boat Standards (see also Rule 18)

- (1) Boat must be of vee, flatbottom, modified vee, or tunnel design; no hydros.
- (2) Driver must be seated in a seat.
- (3) Running surfaces may be altered.
- (4) Factory or non-factory turn fins or skegs are allowed.
- (5) Super Stock and Altered engines are not eligible in OPC Sport classes.
- (6) Power trim and/or adjustable spoilers shall be allowed in Sport classes.
- (7) Transom adapters for raising, lowering or extending the engine will be allowed, but must be fixed while underway.

#### Sport C Motor Standards (see also Rule 20)

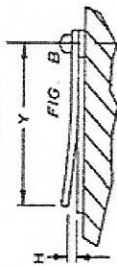
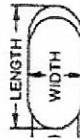
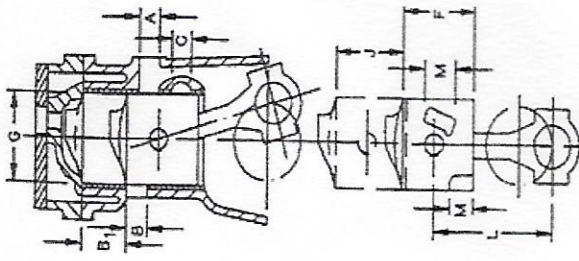
- (1) Engine cowling must be in place during race. If cowling or engine is repainted it must be repainted to original colors to retain product identification.
- (2) Tiller arms may be removed.
- (3) Any reed material will be acceptable.
- (4) Gearcases may have their outside surfaces contoured, however, they must meet production specifications.
- (5) Solid or pinned motor mounts allowed.
- (6) Allow the sharpening of the skeg to a 1/32 radius and remove wear plate.
- (7) Sport C engines may have a substitution of a maximum of 2 sleeves of any manufacturer with original porting specifications and the same material will be allowed for the repair of damaged cylinders.
- (8) Grinding will be permitted to match to block casting to the ports/liner. No grinding is permitted beyond 5/8 inch past the liner into the casting of the block.
- (9) All specifications of OPC Technical specs must be maintained
- (10) **It is permissible to add additional support to the electric starter.**

Date: 4-1-2011  
 Model Year:

## RACE CLASS: SPORT-C Tohatsu / Nissan

MANUFACTURER		NISSAN / TOHATSU	
ADVERTISED SALES NAME		NS40C	
DISPLACEMENT MAX		in <sup>3</sup>	30.1
NUMBER OF CYLINDERS			2
MIN. VOLUME OF COMBUSTION CHAMBER INC'L SPARK PLUG HOLE)		cm <sup>3</sup>	26.5
CARBURETOR		VENTURI	±.015 in
		BORE	±.015 in
		QUANTITY PER ENGINE	1
CYLINDER BORE		±.003 in	2.755
PISTON STROKE		±.011 in	2.519
ROD LENGTH		±.006 in	4.566
DECK HEIGHT		±.012 in	7.12
PISTON LENGTH		±.030 in	2.637
PORT HEIGHT		±.030 in	--
NUMBER OF PORTS PER CYLINDER		A TRANSFER	3
		B EXHAUST	1
		C PISTON	2
PORT HEIGHT		A TRANSFER	±.035 in
		B EXHAUST	±.035 in
		B <sub>1</sub> EXHAUST	±.035 in
		C PISTON	±.035 in
PORT TIMING		A TRANSFER	±2° ATC
		B EXHAUST	±2° ATC
		C PISTON	±2° ATC
# OF PORTS			6/CYLINDER
LENGTH x WIDTH SIZE OF PORTS		MAX	3 @ 1.000, 3 @ .890x0.640
REED MAT'L			Any Material
REED THICKNESS		±.001 in	X
H REED STOP HGT.		MAX	2.50
Y CHECKING DIS		±.030 in	1.098
FLYWHEEL		MIN	7.5
PISTONS, RINGS, ROD, WRIST PIN, SPACERS, BEARINGS		MIN	14.0

### POWERHEAD SPECIFICATIONS



Flat Plate Volume- Cylinder head removed from block, sparkplug hole volume included.  
 Clearance Volume- Cylinder head on motor piston @ TDC, sparkplug hole volume included

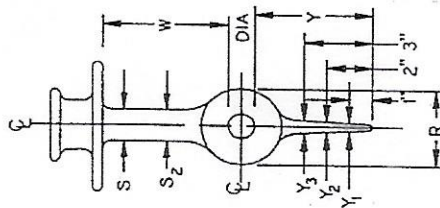
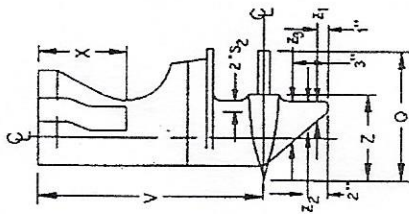
**WARNING! FOR INSPECTION ONLY!** These specifications are not intended as a guide for modification or "blueprinting" and are subject to change as needed.

Date: 4-1-2011  
 Model Year:

## RACE CLASS: SPORT-C

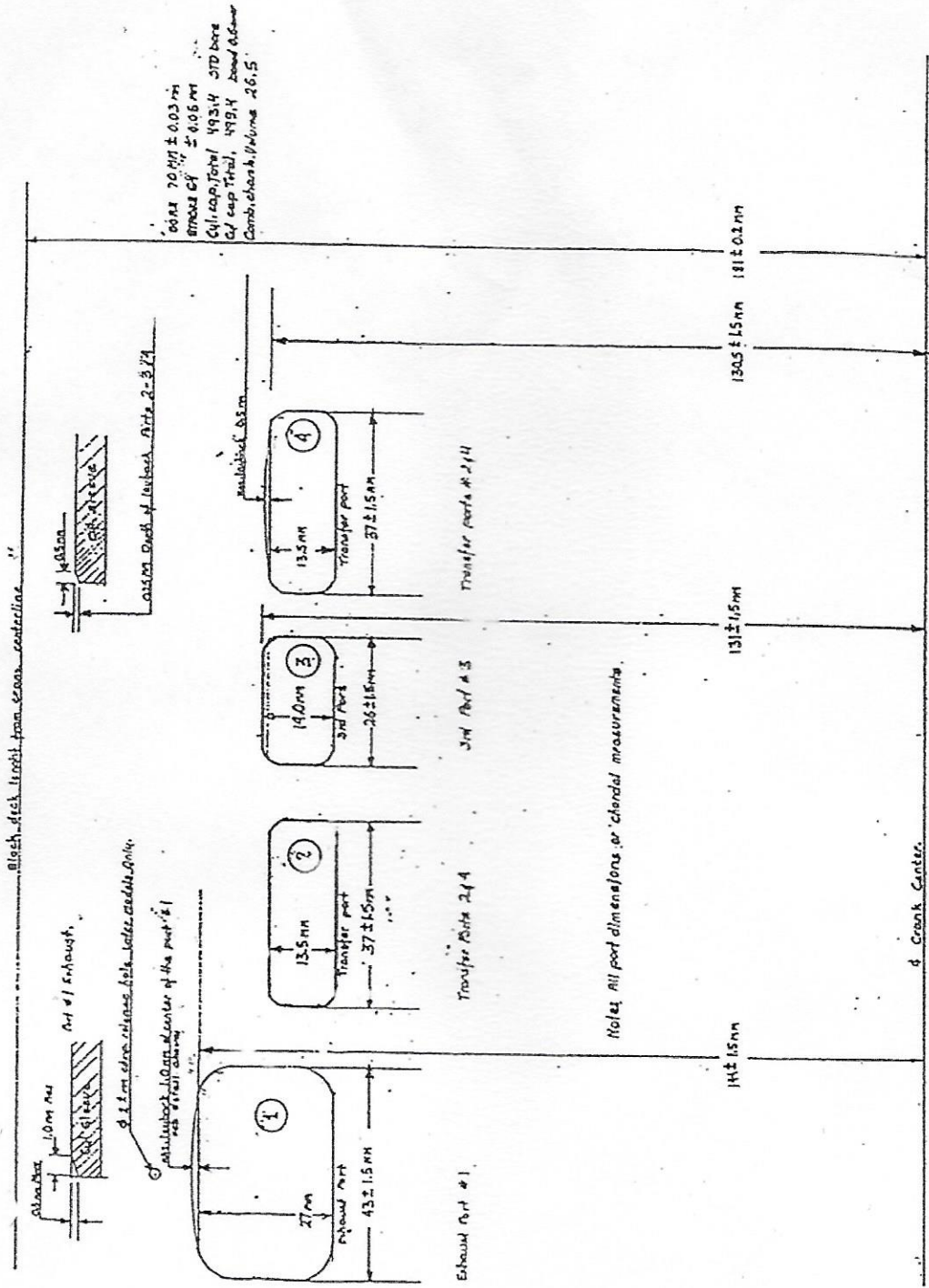
MANUFACTURER		Nissan/Tohatsu	
GEARCASE MODEL IDENTIFICATION		NS40C	
ADVERTISED SALES NAME		NS40C	
GEAR RATIO		13:25	
X	EXHAUST TUBE LENGTH- POWERHEAD BASE TO PRIMARY TUBE END	±.25	in
Q	TORPEDO LENGTH (W/ PROPSHAFT)	MAX	in
R	TORPEDO WIDTH	MIN	in
S	STRUT WIDTH	MIN	in
S <sub>2</sub>	STRUT WIDTH (2" FORWARD OF TRAILING EDGE	MIN	in
W	DIS. FROM PROPSHAFT TO CAVITATION PLATE	±.2	in
Y	LENGTH OF SKEG FROM PROPSHAFT	±.2	in
Z	TORPEDO LENGTH	±.2	in
V	PROPSHAFT CENTERLINE TO POWERHEAD BASE	±.2	in
			LONG SHAFT
			SHORT SHAFT
Y <sub>1</sub>	SKEG THICKNESS	MIN	in
Y <sub>2</sub>	SKEG THICKNESS	MIN	in
Y <sub>3</sub>	SKEG THICKNESS	MIN	in
Z <sub>1</sub>	SKEG CORD LENGTH	±.2	in
Z <sub>2</sub>	SKEG CORD LENGTH	±.2	in
Z <sub>3</sub>	SKEG CORD LENGTH	±.2	in
DIA	PROPSHAFT DIA	±.1	in

GEARCASE SPECIFICATIONS



WARNING! FOR INSPECTION ONLY! These specifications are not intended as a guide for modification or "blueprinting" and are subject to change as needed.

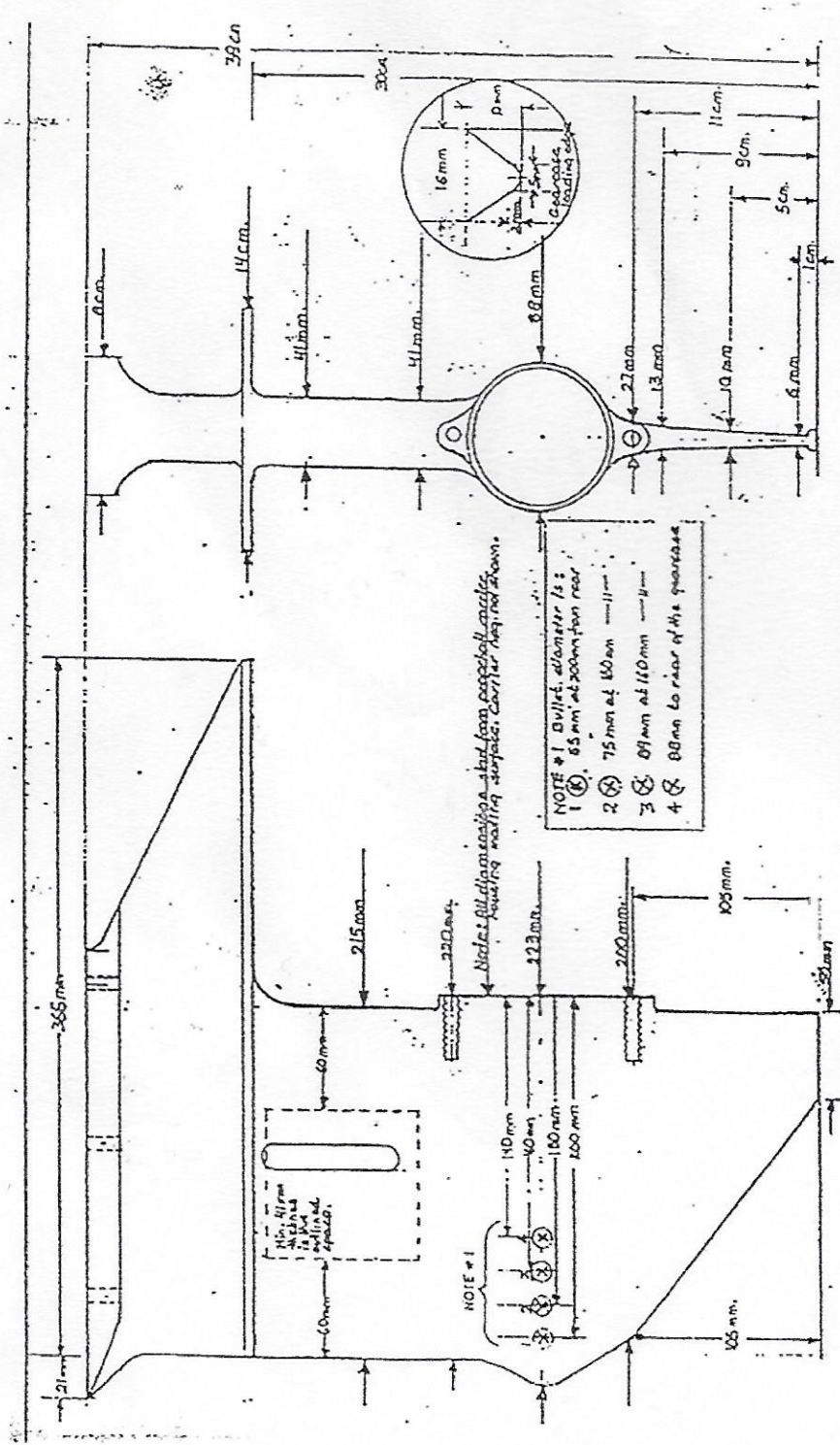
# SPORT-C NOTES: NISSAN/TOHATSU



M 40C TOHATSU, Part layout dimensions, APBA Inspection sheet Prepared Jan 17, 1991 by Roman L KRUK CHIEF, TOHATSU USA INC. NASH

Date: 4-1-2011  
 Model Year:

# SPORT-C NOTES: NISSAN/TOHATSU



**TOHATSU M90C A TOLERANCE OF  $\pm 0.20$  mm,  $\pm 1.0$  mm WILL BE ALLOWED**

By: Ronan L. Krull, GM, Tohatsu USA Tech Dept.	Drawn By: Richard Heston APBA Tech Insp. Com.
2011	Accepted By: TO BE USED AS A GUIDE ONLY
Feb 19 - 1991	By: Ronan L. Krull
US: APBA estimated recommended quantities, spec.	Table 1111